

HENRY COUNTY FARMER



Official Publication Of The Henry County Farm Bureau, Cambridge, IL 61238

HENRY COUNTY FARM BUREAU DATEBOOK

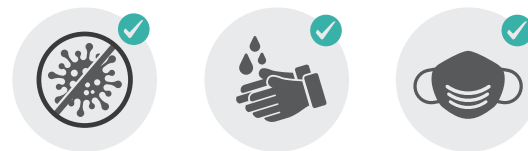
DECEMBER

- 3** Henry County Pork Producers Meeting, HCFB Boardroom, 7pm
- 7-10** Illinois Farm Bureau Annual Meeting, Palmer House, Chicago
- 17** HCFB Foundation Annual Meeting, HCFB Office, 6pm
HCFB Board of Directors Meeting, HCFB Boardroom, 7pm
- 19** Farm Bureau Women's "Wreath Making Class", RSVP Required, HCFB Boardroom, 6pm
- 24-25** HCFB Office
Closed for Christmas
- 31** HCFB Office
Closed for New Years

JANUARY

- 1** HCFB Office
Closed for New Years
- 6** Henry County Pork Producers Meeting, HCFB Boardroom, 7pm

HENRY & STARK COUNTY HEALTH DEPARTMENT NOTES National Influenza Vaccination Week, December 2-6, 2024



The Henry and Stark County Health Departments and their First Choice Healthcare Clinics in Kewanee and Colona announce that December 2-6, 2024 has been proclaimed National Influenza Vaccination Week. National Influenza Vaccination Week (NIVW) is an annual observance in December to remind everyone 6 months and older that there's still time to get vaccinated against flu to be protected during the upcoming season. Therefore, we are pleased to remind local residents we have Seasonal Flu and Pfizer Updated Covid-19 Shots for all Adults & Children (6mos.+) at our clinics in Kewanee, Colona and Toulon while supplies last.

Adults 18 years+ can get their Flu vaccination on a "Walk-In Basis" (Monday-Friday 8am-4pm) and Children's Flu shots (6 mos+) are available by appointment at all locations.

Covid-19 shots are available by appointment at all locations, simply call the First Choice Healthcare location nearest you: Kewanee 309-852-5272; Colona 309-792-4011 and Toulon 309-852-3115.

RaeAnn Tucker, Health Department Director of Health Promotion states, "Vaccination is particularly important for people who are most vulnerable to developing serious flu complications, including people with certain chronic conditions such as asthma,

diabetes and heart disease. In fact, last flu season 9 out of 10 adults hospitalized for flu had at least one reported underlying medical condition."

In addition to Influenza and Covid-19 vaccination; we offer some suggestions on how to help keep germs away during upcoming gatherings, activities and the infectious season:

- Stay up to date with COVID-19 & Flu vaccines
- Know what to do if you're exposed
- Clean hands frequently
- Cover your nose and mouth when coughing
- Stay at home when you are sick
- Avoid contact with others who are sick
- And feel free to wear a mask

To make an appointment or for more information, call the First Choice Healthcare Clinic nearest you Kewanee 309-852-5272; Colona 309-792-4011; or Toulon 309-852-5272 visit our website at www.henrystarkhealth.com or find us on Facebook at Henry and Stark County Health Departments or Follow Us on Twitter and Instagram.

Follow Us   



HENRY COUNTY TEACHERS RECEIVE GRANTS

The Illinois Agriculture in the Classroom program and the IAA Foundation along with the Illinois Farm Bureau® have released the names of the 2024-2025 Teacher Grant Winners.

Jacqueline Wetzell, Geneseo High School and Trisha Main, Galva High School, have been awarded book grants.

The mission of the Illinois Agriculture in the Classroom (IAITC) program is to bring accurate and authentic agricultural information to students in grades PreK-12 across Illinois. "Each year our teacher grant program is very competitive, and our judging panel is amazed at the unique programs teachers use to infuse agriculture into

their curriculum. Our grant recipients are ready to jump into units of study highlighting agriculture. We see 2024-2025 as a prime opportunity for teachers to infuse their curriculum with agriculture" said Kevin Daugherty, Director, Illinois Center for Agricultural Engagement and IAITC.

Susan Moore, Director of the IAA Foundation added, "We take pride in providing resources so teachers can continue to engage and inspire students. These grants are a meaningful way for the IAA Foundation to partner with likeminded organizations to fulfill our mission to support the future of agriculture through education."

Partner organizations of IAITC include Illinois Farm Bureau, Facilitating Coordination in Agricultural Education (FCAE), University of Illinois Extension, Illinois Beef Association, Illinois Corn Growers, Illinois Pork Producers, Illinois Soybean Association, Midwest Dairy Association, Illinois Department of Agriculture, Illinois Department of Natural Resources, and the Association of Soil and Water Conservation Districts. In addition, annual donors include agribusiness partners and event participants with an interest in supporting the future of agriculture. For information on how individuals can contribute, visit www.iaafoundation.org. For information on IAITC, visit www.aginthe classroom.org.

HENRY COUNTY FARM BUREAU BOARD OF DIRECTORS

EXECUTIVE COMMITTEE

President: Steve Nightingale
Vice President: Heather Poppy
Vice President: Brian Corkill
Secretary: Kevin Schwartzkopf
Treasurer: David Westerlund

DISTRICT 4

Justin Frank, Kate Huffman,
Chris Kendall, Steve Krause

AT-LARGE

Gary Asay, Sadie Asher,
Hilary Boelens, Jim Larson,
Pat Martens, Jan Weber, Bill
Wyffels, Steve Zobrist

STAFF

Manager: Katie Laleman,
FBCM
Administrative Assistant:
Chelsea Vyncke

DISTRICT 1

Emily Baum, Tim Gould,
Adam Schroeder, Bridgett
Wildermuth

DISTRICT 2

Brian Daniels, Greg Decker,
BJ Weber, Tim Yager

DISTRICT 3

Thad Curry, David Schmedt,
Lisa VanWatermeulen,
Evan Youngren

Henry County Farmer (USPS-240- 260) published monthly, A nominal fee charged for subscription, by the Henry County Farm Bureau, Inc., 128 N. Prospect Street, Cambridge, IL 61238. Periodical postage paid at Cambridge, IL and/or additional mailing offices. POSTMASTER: Send address changes to Henry Co. Farm Bureau, 128 N. Prospect Street, Cambridge, IL 61238

COLLEGIATE INTEREST GROWS



By Phyllis Coulter, FarmWeekNow.com

Illinois Collegiate Farm Bureau, which started over a decade ago, has grown to about 500 members and welcomed a new chapter at Heartland Community College this year.

"I am really excited to see so much growth and engagement already this year," said Taylor Hartke, Illinois Farm Bureau youth and collegiate program coordinator.

"It speaks to the quality of the students who are part of Collegiate Farm Bureau and the value that they place in getting involved and providing opportunities for other students as well," she said.

While Collegiate Farm Bureau cultivates members who will remain engaged with the Farm Bureau into the future, it unites students as the voice of agriculture on their campuses and in their communities now, she added.

In this academic year, about 185 students are new members in 12 chapters across the state.

"These numbers represent tremendous potential for the future of our organization," Hartke said. "I hope they will be members for a long time, and we'll see them as Young Leaders."

The chapters give students industry experience including job shadowing,

and provide professional development, networking and community service activities.

Hartke likes to remind students: "While you are pouring into your community, the community is pouring into you."

Not only do students have the opportunities for scholarships and leadership training as Collegiate Farm Bureau members, but chapters also prioritize community service efforts at the local level such as providing food to local pantries and buying Christmas gifts for children in need.

"We encourage that collaboration piece between collegiate, Young Leaders and county Farm Bureaus," Hartke said.

"We've had a record number of students at the leadership training program and one of the biggest Collegiate Discussion Meets so far, and I'm optimistic that will continue this year," said Hartke.

Among the 20 students who competed in the Collegiate Discussion Meet in Bloomington on Nov. 1, was Wabash Valley College freshman Aubrey Lambird from Olney in Richland County. She said FFA and Farm Bureau have been a big part of her life so far. "It's my home away from home," Lambird said.

FARM BUREAU FOUNDATION TO HOLD ANNUAL MEETING

Notice is hereby given of the Annual Meeting of the Henry County Farm Bureau Foundation to be held on Tuesday, December 17, 2024. The Foundation meeting will begin at 6:00 p.m. at the Henry County Farm Bureau, Cambridge, Illinois.

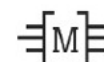
Make the Most of Your Farmland Investment

- Farmland Sales and Acquisitions
- Farmland Auctions
- Certified Farmland Appraisals
- Professional Farm Management



309.944.2184

www.Hertz.ag



Miller Farm & Business, Inc.
Taxes • Accounting • Payroll

Individual • Farm • Corporate • Trust & Estate

1041 S Oakwood Ave • Geneseo, IL 61254

Ph. 309.944.3290 • Fax 309.857.0182 • Email: llmiller@millerfb.com

www.millerfb.com

BEGINNER ARTISAN SOURDOUGH CLASS

Wed., January 15, 2025
6:00 p.m. – 8:30 p.m.

Henry CFB
128 N. Prospect St
Cambridge

Cost: \$60 per person

Instructor Andi Konie, The Garden Guru, will cover sourdough basics, demonstrating starter stages (asleep, active, and hungry) and guiding you in mixing an artisan loaf to finish at home. You'll leave with an established starter, a ready-to-eat loaf, two loaves to bake at home, a feeding schedule, and plenty of sourdough know-how!

Registration opens on Dec 16 at 10am
Class is limited to the 15 people.

Sign-up at:
<https://hcfbsourdough.eventbrite.com>

Sponsored by the HCFB
Education Committee



Bring the following supplies:
• 2 mixing bowls (heavier bowl is easier to mix)
• mixing spoon

JEFFRIES TRUCK & TRAILER REPAIR



309-937-2402

HYDRAULIC HOSE REPAIR

IMEL PUMP SERVICE

Business 937-5332 • Cell Phone 945-8533

Water Well Contracting • Water Systems Installed

Fred Jacket & Goulds Pumps

Submersible Pump & Jet Pump Repairs

Trenching/Backhoe Service

Iowa Hydrants & Water Conditioning

403 N. West St., Cambridge

Residence: 207 N. Poplar, Cambridge

Douglas W. Irwin & Co., Ltd. Certified Public Accountants

Tax Preparation & Planning For Farmers,
Individuals, Partnerships and Corporations
Monthly & Quarterly Bookkeeping

10% Discount to Farm Bureau Members on tax preparation

We offer electronic tax filing

Make your appointment NOW!

222 N. Main Street
Kewanee, IL 61443
309/852-5515

Farm Bureau
Cambridge, IL 61238
309/937-2411

GALESBURG LUMBER & CONSTRUCTION SUPPLY, LLC

161 N Academy St
Galesburg, IL 61401

Lumber

Ardex

Milwaukee Tools -W.R. Meadows

Phone: 309-342-5185

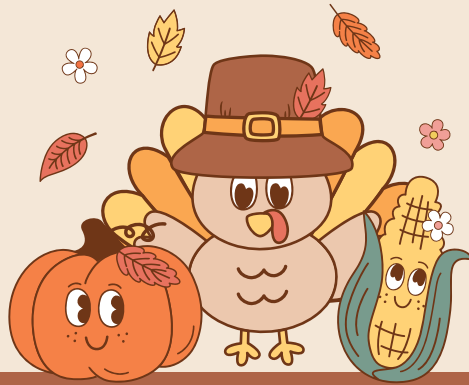
Email: sales@galesburglumber.com

Local Service Delivery Specialty



TURKEY TIME!

Kindergarten students at Galva Elementary School learned about turkeys and made a "turkey" cookie for their Agriculture in the Classroom program.



LEARNING ABOUT CORN

First grade students at Southwest Elementary School, in Geneseo, learned about different kinds of corn and made a craft Indian corn. The program was presented to the students by Henry County Ag in the Classroom Coordinator, Paula Janson.

HENRY COUNTY PORK PRODUCERS SCHOLARSHIPS

The Henry County Pork Producers Association will award scholarships to several Henry County students enrolled in college in the fall of 2025. The applicant must be an undergrad and in their first four years of college attendance. The ideal candidate will have a background in agriculture; however, pursuit of an agriculture degree is not required. The student or their family will be required to be a pork producer member. Those with interest please contact Tom Dale.

ENTRY DEADLINE: JANUARY 17, 2025

MORE INFORMATION

CONTACT: TOM DALE
 henrycountypork@gmail.com
 Call or Text: 563-357-0093

Freezer Beef for Sale

50/50 Wagyu and Angus Simmental
 Halves & Quarters Available
 Mitchell Vincent
 (309) 489-6301

Streitmatter Land Improvement, Inc.

110 S. Main • Wyoming, IL 61491
 Drainage & Excavating • GPS Equipped
 Water Table Management
 Office 309-695-2800 Cell 309-696-9861

- GPS Mapping & Design
- Farm Drainage
- Waterways
- Commercial Tile Plow
- General Hauling
- Dry Dams
- Terraces
- Basement & Ponds
- Stabilization Structures

ILLINOIS LICA
 starktiler@gmail.com

LEARN MORE ABOUT ALL UPCOMING EVENTS, BENEFITS, AND MORE

HENRYCOFARBUREAU.ORG





FINGER FOODS DELIVER HOLIDAY FUN, SPARK CONVERSATION

Butcher block paper covered the 60-inch round table, transforming it into an oversized food platter. Piles of cubed cheeses, sliced cured meats, olives, fruits, veggies and spreads dominated that five-foot-diameter space. Salami shaped into roses, fanned crackers and varying flavors of cheeses gave aesthetic appeal to a party spread worthy of a meal.

While that bridal shower display upstages anything on my kitchen island, I so fondly enjoy the holiday-time finger foods that fill bowls, line platters or cover charcuterie boards. They deliver big taste in bite-size amounts, and the trendy charcuterie concept of artistically piling little foods on wood cutting boards and platters (or tables) makes presentation fun.

The centuries-old French practice has evolved from charcuterie boards of strictly meats to include creative displays of cheeses, fruits, vegetables, crackers, spreads,

desserts, nuts and even candy. Generation Z adores the concept. Recognizing that, the Farm Bureau has sponsored charcuterie classes to connect with consumers born in the late 1990s and early 2000s. What an opportune time to talk nutrition. Talk food-shopping habits. Talk Illinois agriculture.

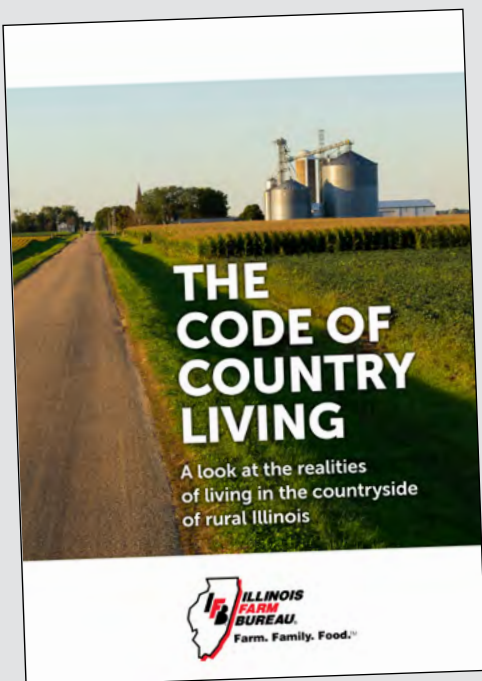
And therein lies one of my loves for finger foods: socialization. Little foods are social to make, social to display and social to eat. Family and friends congregate around the kitchen island to converse as they hover the inventory of tantalizing finger foods like ham-and-ranch wrapped pickles, tortilla rollups with a dab of salsa, seasoned pretzels and homemade Chex mix. Toothpicks aid dining on bacon-wrapped little smokies and homemade meatballs to help move this eating experience from appetizer to meal.

Sometimes, the main course includes small sandwiches of chicken salad and triangle-cut, sliced loaf bread sandwiches

of our grandma's ground bologna salad. The beloved family-recipe cheeseball often triggers stories of cheeseball design competitions or inside jokes of cheeseball thefts from Christmases past. We always have carrots, broccoli florets and grapes to add nutritional balance to the finger food lineup if nothing more than to feel better about Mom's Crispix Mix. That sugar-laden recipe probably four-folds the simple cereal's calories. But dang, it's addictively good, and she makes it only during the holidays.

My childhood 4-H club had a "finger food potluck" at every January meeting, a novel idea in an era when most meals needed more cutlery than fingers. Small foods made the meal and the memories then, as they do now.

About the author: Joanie Stiers farms with her family in West Central Illinois, where they raise corn, soybeans, hay, beef cattle, backyard chickens and farmkids.



PICK UP OR DOWNLOAD A COPY OF "The Code of Country Living"

The original Code of Country Living booklets from Illinois Farm Bureau were first published and distributed in the late 1990's, but, as with many things, some aspects of rural living have changed in recent decades. Living in the country is still a wonderful way of life – if your expectations are in line with reality. This updated and modernized booklet is available to help people make

an informed lifestyle decision about purchasing a home or a homesite in rural Illinois.

The publication provides an overview and factors to consider with regards to agriculture, access, utilities, property, nature, government and neighbors, along with suggestions on where to find more information. Though it cannot convey the entirety of

the understanding borne from a lifetime of rural living, it can give you a glimpse of what it takes to live by what might be called the Code of Country Living.

For a printed copy, please contact your local county Farm Bureau or you can find more information and a digital version at: on.ilfb.org/countryliving.

MENTAL HEALTH SERVICES

Holiday Blues? We Can Help!

- Depression
- Anxiety & Stress
- Behavioral Problems
- Bipolar Disorder
- ADHD
- Family/Parenting Issues
- Suicide Prevention
- Trauma & Loss

Call Today! 309-852-5272

Farm Bureau Salutes the COUNTRY Financial Membership Recruiter of the Month

Jerry Samuelson, Woodhull

TIME TO PREPARE FOR BOI REPORTING REQUIREMENTS

By Robert Klemm, FarmWeekNow.com

Hopefully by now you have heard about reporting requirements under the Corporate Transparency Act (CTA) that is creating Beneficial Ownership Information (BOI) reporting requirements for corporations, limited liability companies and other entities.

The CTA was originally passed to combat money laundering and organized crime funding, through numerous actions, including BOI filing to the U.S. Treasury Financial Crimes Enforcement Network (FinCEN).

This filing requirement may affect nearly 5,000 farming operations in Illinois, including many family farms and partnerships. However, less than 11% of eligible businesses nationwide have filed their BOI. Those who don't report BOI to FinCEN by the Jan. 1, 2025 deadline or who fail to update information in the future could face civil (\$591 per day of violation) and criminal penalties (up to two years imprisonment and a fine of up to \$10,000) as of April 2024. However, this civil penalty amount is adjusted annually for inflation.

To help you understand the requirements and if you're eligible, I sat down to answer some of the top questions we've been hearing from Illinois farmers.

Q: Who needs to report?

A: Any small business that files an incorporating document with their state business authority, including corporations, limited partnerships or limited liability companies (LLCs) are required to report. Specifically, "small entities" are any company with less than 20 employees and under \$5 million in cash receipts.

All beneficial owners of an eligible company – anyone with a significant stake in the company, who exercises substantial control or owns at least 25% of the company's ownership interests, whether they have direct legal ties to the business — are all required to report.

For farms, all owners involved in corporations and/or partnerships, including farm businesses formed as c-corps, will need to report. Sole proprietorships (someone who owns an unincorporated business by themselves) do not need to report. Certain types of trusts or foundations may also be reporting companies.

Q: What information needs to be included in the report?

A: Every company will need to provide their name, address, jurisdiction and tax identification number. Each beneficial owner of a company will need to provide their name, date of birth, address and

identification (e.g., passport, driver's license). All beneficial owners can be included in the same report and there is no maximum number of beneficial owners who can be included. Company applicants (those who actually filed for business registration with the secretary of state) for businesses created or registered in 2024 or later will need to be included in reporting, as well.

Q: I already submitted this information to a state agency or a financial institution. Do these reports meet the requirements for the CTA?

A: No. The Department of Treasury's FinCEN does not receive business ownership information from state agencies (e.g., LLC 5.5s submitted to the secretary of state). The beneficial ownership reports that some banks and financial institutions require when fulfilling their federal customer due diligence obligations often require different information and do not fulfill the CTA requirements.

Q: How do I submit a report?

A: All reports must be submitted electronically at boiefiling.fincen.gov. Reporting companies may file on their own, using guidance issued by FinCEN, or can authorize a reporting company to act on its behalf. A frequently asked questions page and video tutorial are available at fincen.gov.

gov/BOI to further explain how to file the report and what information is needed.

Q: What is the deadline for reporting?

A: The deadline to file varies slightly depending on business inception. A company created or registered to do business before Jan. 1, 2024 will have until Jan. 1, 2025 to file its initial BOI report.

A company created or registered in 2024 will have 90 calendar days to file after receiving public notice that its creation or registration is effective. All new companies created or registered on or after Jan. 1, 2025 will have 30 calendar days to file after receiving public notice that its creation or registration is effective.

If you have further questions, it wouldn't hurt to discuss this with your lawyer, accountant or other service provider to confirm if you need to file and ensure you comply with FinCEN's standards.

For more information, visit on.ilfb.org/BOIreporting.

Robert Klemm Illinois Farm Bureau District 11 director from DeWitt County. He operates Klemm Tax Service and works to help farmers maximize strategic tax planning.



“CRAM THE CAB” FOOD DRIVE

Young Leaders held the annual “Cram the Cab” Food Drive on November 9 at Fareway in Geneseo. Over 1,280 pounds of food and cash donations were collected and donated to the local food pantry. A special thank you to everyone that donated and to Fareway Meat & Grocery, Prairie State Tractor and Ed Morse Ford. Young Leaders, (l to r) Makenna Walker, Justine Johnson and Logan VanRheenen accept a wonderful donation from the Henry County Fair Royalty, Miss Henry County Fair, Johnna Fulcher; Junior Miss, Camryn Ebert and Little Miss, Owyn Fritz.



FARM BUREAU WOMEN DONATE BOOKS

Each year Farm Bureau Women donate agricultural books to all grade schools and public libraries in the county. This is the 34th year that books have been donated that are agriculture related. The book and resource guide presented this year was "The Soil in Jackie's Garden" by Author, Peggy Thomas. Brittany Witt, representing Farm Bureau Women, is shown with students at Visitation Catholic School in Kewanee.



Life insurance will never be more affordable than it is today



Mike Geuns
Annawan
(309)935-6697



Eric Henderson
Geneseo
(309)944-4618



Julie Hessler
Orion
(309)526-8024



Tom McKie
Cambridge
(309)937-3372



Jerry Samuelson
Woodhull
(309)430-3430



Erin Spivey
Kewanee
(309)852-2121



Katie Spivey
Galva
(309)932-3272



Cassie Stahler
Geneseo
(309)944-4618



Dan Kniss
Agency Manager
(815)221-3075

Life insurance policies issued by COUNTRY Life Insurance Company® and COUNTRY Investors Life Assurance Company®, Bloomington, IL.
"COUNTRY Financial" is the marketing name for the COUNTRY Financial family of affiliated companies (collectively, "COUNTRY"), which include COUNTRY Life Insurance Company®, COUNTRY Mutual Insurance Company®, and their respective subsidiaries, located in Bloomington, Illinois.
1220-507HC_10/4/2024



PROPERTY FRAUD ALERT

Property Fraud Alert is a community outreach service that serves to alert subscribers against the possibilities of fraudulent activity being committed against their personal mortgage or property. The FBI has deemed property fraud as the fastest growing crime within the United States.

How does it happen? Someone will attempt to have counterfeit documents processed by recording a fraudulent document in the County Recorder's Office, making it look like they own your home or property. By subscribing for the Property Fraud Alert service you will be notified any time there is recording activity associated with your name. The alert system is a unique service that keeps Land Recording Offices across the country an essential resource to the public.

Once a land owner signs up for the free service they are automatically alerted via phone call or email by the Property Fraud Alert service. Notification is given promptly, allowing the subscriber the opportunity to possibly save themselves time and avoid paying large legal fees if the document recorded is determined to be fraudulent.

It's easy to subscribe and it's free of charge! You can contact the Henry County Recorder's Office or you can visit my website at www.henrycty.com, click on the Recorder's Office and choose Property Fraud Alert! If you have any questions, please contact Barb Link, Henry County Recorder at (309) 937-3480.

HENRY COUNTY VETERANS

JOIN HONOR REWARDS

SIGN UP TO RECEIVE

- Veteran Identification Card
- Discounts • Promotions
- and other incentives

At participating local businesses

Henry County Veterans & Businesses sign up at www.HonorRewards.com

Barbara M. Link, Henry County Clerk/Recorder
307 West Center Street, Cambridge, IL 61238
(309) 937-3480



AG IN THE CLASSROOM RECEIVES GRANT

Katie Laleman, Manager of the Henry County Farm Bureau, accepts a grant award for Henry County Agriculture in the Classroom, from the Kewanee Rotary. Presenting the award check is (l to r) Jon Looney and Christian Jackson.



YOUNG LEADERS AWARD FFA JACKET SCHOLARSHIPS

Shane Asher, Chair of the Young Leaders, is pictured presenting the FFA Jacket Scholarship awards to Hannah Ames and Caylee Beam, of the Cambridge FFA Chapter. Hannah and Caylee were two of the three applicants selected to receive scholarships from the Farm Bureau Young Leaders to be used towards the purchase of their FFA Jackets.

DWYER APPOINTED TO EPA ADVISORY COMMITTEE

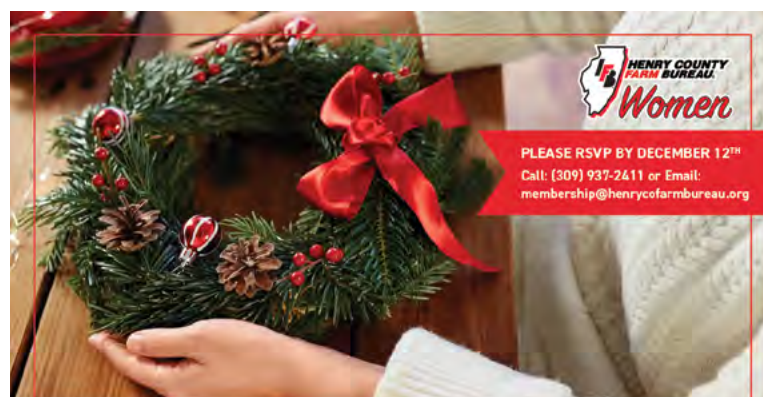


U.S. Environmental Protection Agency Administrator Michael S. Regan announced the appointment of 18 new members and reappointment of six members to the Farm, Ranch and Rural Communities Federal Advisory Committee.

The FRRCC provides independent policy advice and recommendations to the administrator on crucial environmental issues affecting agriculture and rural communities.

Megan Dwyer was among the new appointees to the Advisory Committee. She is the director of conservation and nutrient stewardship for IL Corn and is a fourth-generation farmer and certified crop adviser.

In 2023, Dwyer received Illinois Farm Bureau's Excellence in Ag Award. She resides on the family farm in northwest Illinois with her husband, Todd, and their four children.



JOIN THE FARM BUREAU WOMEN FOR A Holiday WREATH DECORATING CLASS

THURSDAY, DECEMBER 19, 2024 | 6:00 PM - 7:30 PM

It's time for holiday decorating! Bring your own wreath and supplies for this fun class with florist, Julie Frisk. Julie will demonstrate and instruct you to create beautiful bows and decorate your wreath, just in time for the holidays!

Free to attend. Food will be served.



Henry County Farm Bureau: 128 N. Prospect St. Cambridge, IL

15th Annual BUSHELS FOR HUNGER

October 1 - January 31

Grand total Since 2010
\$324,626

equaling
1,623,128 million meals.

Tell your participating elevator that you would like to donate.

- Atkinson Grain
- Big River Resources
- Cargill
- CHS
- Gold Star FS
- Hillsdale Elevator
- River Valley Cooperative

Proceeds benefit the River Bend Food Bank



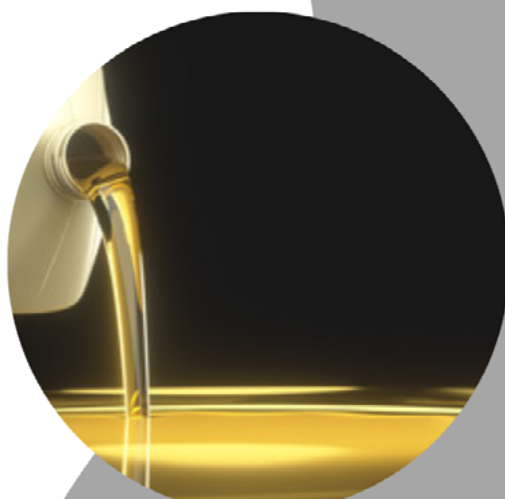
Sponsored by the Henry, Mercer, and Rock Island County Farm Bureaus

Safe LIMITED TIME

OIL SALE

OIL: 50¢ OFF/GALLON
GREASE: 20¢ OFF/POUND

ENDS ON: DEC. 25



MUST TAKE DELIVERY BY: JAN. 31ST
MIN BULK DELIVERY: 55 GAL OR MORE



RECIPE OF THE MONTH

CRANBERRY BREAD

Reprinted from the 50th Anniversary Farm Bureau Women's Committee Cookbook



Ingredients:

- 2 c. of flour
- ½ tsp. salt
- 1 ½ tsp. baking powder
- ½ tsp. baking soda
- 1 c. of sugar
- 1 Tbsp. Melted shortening, or cooking oil
- Juice and rind of 1 orange
- Boiling water
- 1 egg, beaten
- 1 c. raw cranberries, cut in half.
- 1 ½ c. nuts

Instructions:

1. Sift dry ingredients twice. Put juice and rind in measuring cup. Add shortening and water to make ¾ cup.
2. Add egg, nuts, and berries and mix.
3. Pour into greased 9x5x3 pan, bake 1 hour at 325 degrees, or until done.

SALE SALE SALE

For the Month of December

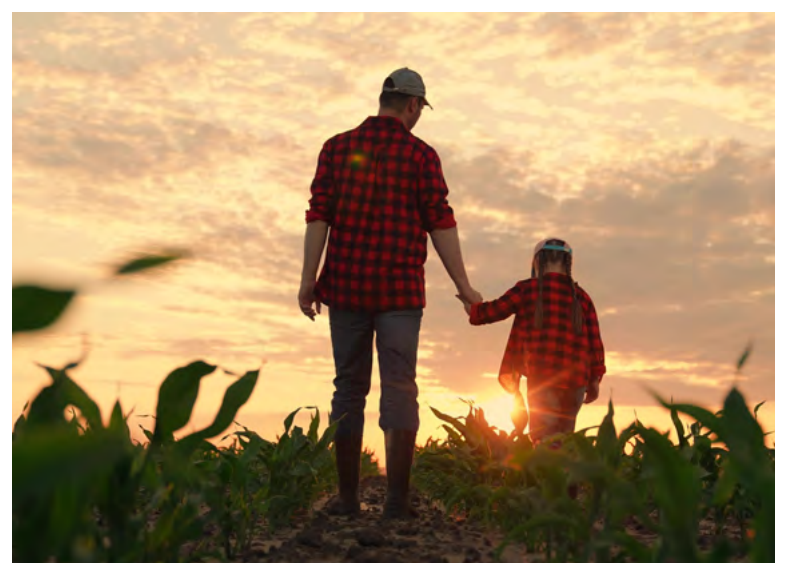
Current Henry County Farm Bureau members can purchase the 2023 Plat book for \$15 (50% off)!

We also have Custom Pork Spice- \$10/shaker and Cinemark tickets-\$10/each
(very limited supply of movie tickets- get them while you can!)

SUPER SALE

SPECIAL OFFER

SALE SALE SALE



GETTING TO KNOW YOUR FARM BUREAU POLICY

103. ILLINOIS BANKING STRUCTURE

We support:

1. An adequate supply of competitively priced credit for all credit worthy farmers.
2. Competent staff in local banks who understands agriculture and the unique risks with which farmers must deal.
3. Fair competition for banks of all sizes and in all locales.
4. Fair competition with other types of lenders.
5. Economic decision making that is not concentrated in the hands of a few large financial institutions.
6. Constant or a net inflow of capital into the area in which financial institutions are being acquired, merged or consolidated.
7. Greater scrutiny of an investigation into anti-trust ramifications and violations in relation to mergers and other acquisitions.

Order now for 2025

0% Financing On Seed

Qualifying Brands
InVision DeKalb NK Wyffels
HiSOY Asgrow Brevant

FS
GOLD STAR FS, INC.