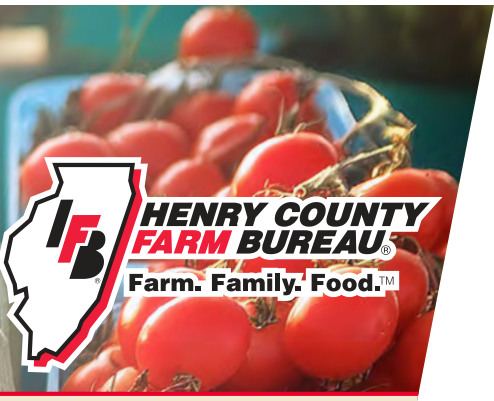


# HENRY COUNTY FARMER



Official Publication Of The Henry County Farm Bureau, Cambridge, IL 61238



## HENRY COUNTY FARM BUREAU DATEBOOK

### JULY

- 2**.....**Market Outlook Seminar,**  
*Lavendar Crest Winery, 6:15pm*
- 4-5**.....**Happy Fourth of July!**  
*HCFB Office closed.*
- 10**.....**Katie Laleman,**  
*HCFB Manager,*  
*on WKEI Tuned in, 8:25am*
- 10**.....**"Safety Stars with YOU",**  
*Central Bank Pavilion*  
*(101 N. State Street,*  
*Geneseo), 5:30-7pm*
- 16**.....**Henry County Farm Bureau**  
*Executive Committee meeting,*  
*HCFB office, 6:30pm*
- Henry County Farm Bureau**  
*Board of Directors meeting,*  
*HCFB Boardroom, 7pm*
- 23**.....**HCFB Young Leaders meeting,**  
*HCFB Boardroom, 6:30pm*
- 25**.....**Farm Bureau Women,**  
**Business meeting,**  
*HCFB Boardroom, 5:30pm*

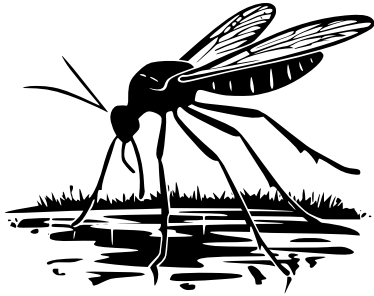
### AUGUST

- 7**.....**District 3 Young Leaders**  
**Discussion Meet,**  
*HCFB Boardroom, 6pm*

## HENRY & STARK COUNTY HEALTH DEPARTMENTS NOTE WET & WARM WEATHER CAN INCREASE MOSQUITO POPULATION



Megan Washburn, Environmental Health Practitioner with Henry & Stark County Health Departments readies a mosquito trap. The Health Department posts area mosquito traps for testing and surveillance of the presence of West Nile Virus. The Health Department is encouraging area residents to help in the effort to cut down the local mosquito population.



The Environmental Health Division of the Henry and Stark County Health Department notes that wet, humid and warm summer weather can mean an increase in our local mosquito population.

The Culex mosquito is the most common vector of West Nile Virus and other viral illnesses. The Culex mosquito relies mostly on artificial containers for breeding sites. An artificial container is anything that will hold water more than 4 to 5 days. Enormous numbers of mosquitoes are produced day after day in such containers.

Therefore, the Health Department offers the following information on how to decrease the number of possible mosquito breeding sites and the potential health risks associated with mosquito bites.

- Discard all useless containers such as tin cans, tires, and stack buckets upside down when empty.
- Turn boats and canoes down when not in use.
- Don't allow water to stand in low areas for more than one week, add small amounts of fuel oil each week to standing pools of water that can't be drained.
- Empty and clean wading pools and bird baths once a week.
- Drain all livestock tanks once a week.
- Cover rain barrels and cisterns with mesh wire screening.
- Puncture holes in the bottom of tire swings to drain accumulated water.
- Clean out gutters and spouts of accumulated debris.
- Repair or replace screening on doors and windows with appropriate mesh.

Other precautions include practicing the three "R's" – reduce, repel, and report.

**REDUCE** - make sure doors and windows have tight-fitting screens. Repair or replace screens that have tears or other openings. Try to keep doors and windows shut. Eliminate, or refresh each week, all sources of standing water where mosquitoes can breed, including water in bird baths, ponds, flowerpots, wading pools, old tires, and any other containers.

**REPEL** - when outdoors, wear shoes and socks, long pants and a long-sleeved shirt, and apply insect repellent that contains DEET, picaridin, oil of lemon eucalyptus, or IR 3535 according to label instructions. Consult a physician before using repellents on infants.

**REPORT** – report locations where you see water sitting stagnant for more than a week such as roadside ditches, flooded yards, and similar locations that may produce mosquitoes. The local health department or city government may be able to add larvicide to the water, which will kill any mosquito eggs.

For more information on West Nile Virus or Mosquito Control Measures call the Health Department at (309) 852-0197 or visit our website at [www.henrystarkhealth.com](http://www.henrystarkhealth.com) or find us on Facebook at Henry and Stark County Health Departments or Follow Us on Twitter and Instagram.





HENRY COUNTY FARM BUREAU

BOARD OF DIRECTORS

EXECUTIVE COMMITTEE

**President:** Steve Nightingale  
**Vice President:** Heather Poppy  
**Vice President:** Brian Corkill  
**Secretary:** Kevin Schwartzkopf  
**Treasurer:** David Westerlund

DISTRICT 1

Jon Chamberlain, Bridgett Wildermuth, Emily Baum, Dan Wolf

DISTRICT 2

Greg Decker, Tim Yager, Brian Daniels, Brandan Weber

DISTRICT 3

Lisa VanWatermeulen, Evan Youngren, David Schmedt, Thad Curry

Henry County Farmer (USPS-240-260) published monthly, A nominal fee charged for subscription, by the Henry County Farm Bureau, Inc., 128 N. Prospect Street, Cambridge, IL 61238. Periodical postage paid at Cambridge, IL and/or additional mailing offices. POSTMASTER: Send address changes to Henry Co. Farm Bureau, 128 N. Prospect Street, Cambridge, IL 61238

DISTRICT 4

Jim DeCrane, Justin Frank, Kate Huffman, Steve Krause

AT-LARGE

Gary Asay, Sadie Asher, Hilary Boelens, Scott Jordan, Jim Larson, Pat Martens, Jan Weber, Bill Wyffels

STAFF:

**Manager:** Katie Laleman, FBCM  
**Administrative Assistant:** Chelsea Vyncke

FFA CELEBRATES  
SHARED  
STRENGTHS

By Phyllis Coulter, *FarmWeek*

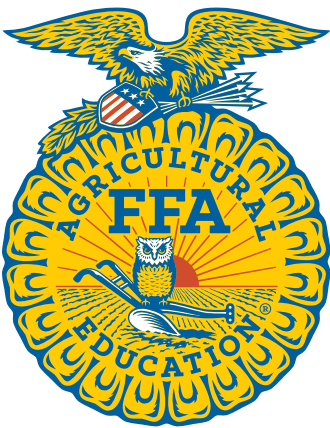
With all the expected pomp and excitement, more than **6,800 members and guests** celebrated FFA achievements during the **96th Illinois FFA State Convention** in Springfield June 11-13.

**Illinois FFA membership totaled 42,000** this year, the most in the organization's history, said Kristi Jones, deputy director of the Illinois Department of Agriculture, who spoke at the event.

She praised members for using innovative ideas to increase mental health awareness as part of Illinois' Farm Family Resource Initiative. She pointed to one FFA chapter that taught people to line dance to relieve stress and another that focused on teaching Grade 7-12 students coping strategies.

Jones also highlighted FFA members' work at the Illinois Products Expo, with the "iconic FFA barnyard" and hosting the farmyard follies games at the Du Quoin State Fair.

Such contributions were highlighted in the theme **"United as One."**



Backstage, excitement was high among award winners including Grace Lemenager, with a Beef Production Placement award in her hand and an array of state and national awards at home. She excelled in national ag sales competitions receiving near-perfect scores and is leaning towards such a career.

"Why not use that talent?" she said of her achievements. Beyond that, she says she just enjoys it, as well as working with the family Simmental business.

"I thank my family for laying that foundation. It's been an amazing last four years," said the Prairie Central High School graduate.

The conference includes a career fair where members drove simulated equipment, answered farm trivia for prizes and got ideas for summer jobs and learning experiences.



LEARN MORE ABOUT ALL  
UPCOMING EVENTS, BENEFITS,  
AND MORE



HENRYCOFARMBUREAU.ORG



2024  
YOUNG  
LEADER

DISCUSSION  
MEET

Contact your county Farm Bureau® for eligibility and contest information.

Topics for District Discussion Meets:

Young farmers and ranchers are finding they need to diversify their farm portfolio. What are some ways that young farmers and ranchers can utilize diversification to explore new revenue sources? How can Farm Bureau support young members as they strengthen their farm and ranch businesses?

Farmers and ranchers are reliant on multiple energy sources to run equipment, heat livestock barns and power storage and maintenance facilities. How can Farm Bureau work with energy companies, local governments and rural communities to increase domestic energy production, minimize loss of agricultural land and protect private property rights?

Districts	Date	Location	Orientation Time	Contest Starting Time
1	Mon. July 29	DeKalb County FB, Sycamore	6:00 PM	6:30 PM
2	Wed. August 21	Stephenson County FB, Freeport	5:30 PM	6:00 PM
3	Wed. August 7	Henry County FB, Cambridge	6:00 PM	6:30 PM
4	Tues. August 6	LaSalle County FB, Ottawa	5:00 PM	5:30 PM
5 & 6	Thurs. August 1	Schaefer Pioneer, Mazon	5:30 PM	6:00 PM
7 & 8	Tues. August 13	Tazewell County FB, Pekin	6:30 PM	7:00 PM
9	Tues. July 16	Brown County FB, Mount Sterling	6:00 PM	6:30 PM
10	Tues. August 6	Cass-Morgan County FB, Jacksonville	6:30 PM	7:00 PM
11 & 12	Tues. August 20	Champaign County FB, Champaign	5:30 PM	6:00 PM
13 & 17	Thurs. July 18	Edwards County FB, Albion	5:30 PM	6:00 PM
14	Mon. August 12	Montgomery County FB, Hillsboro	6:00 PM	6:30 PM
15 & 16	Wed. August 14	Madison County FB, Edwardsville	6:00 PM	6:30 PM
18	Tues. July 23	Massac County FB, Metropolis	6:30 PM	7:00 PM



# IDOA SCHEDULES CLEAN SWEEP COLLECTION IN CENTRAL ILLINOIS

## Program will safely dispose of unwanted agricultural pesticides

SPRINGFIELD, IL. – Residents of 11 Illinois counties can dispose of unwanted agrichemicals for free this year through the Illinois Department of Agriculture's (IDOA) agricultural pesticide "Clean Sweep" program.

A "Clean Sweep" collection has been scheduled in late summer for Bureau, Carroll, Henry, JoDaviess, LaSalle, Lee, Ogle, Rock Island, Stephenson, Whiteside and Winnebago Counties, IDOA announced today. The collection, which rotates among Illinois counties, is open to farmers, retired farmers, nursery owners, private pesticide applicators, structural pest control applicators and landowners who inherited unwanted agricultural pesticides with their property.

"There are two main reasons to take advantage of this program," said Brad Beaver, Bureau Chief of Environmental Programs. "The Department is able to provide the service free of charge thanks to a grant obtained from the U.S. Environmental Protection Agency. If individuals were to properly dispose of agrichemicals on their own, it could be expensive. Secondly, the state of Illinois, not the program participant, will assume liability for the proper disposal of all materials collected."

Participants must register the products they plan to dispose of by July 26. Registration is required to give the waste disposal contractor time to prepare for the different kinds of materials being collected. Forms can be obtained either by calling the IDOA Pesticide Hotline at 1-800-641-3934,

online at [agr.illinois.gov/pesticides/pesticide-clean-sweep-program.html](http://agr.illinois.gov/pesticides/pesticide-clean-sweep-program.html) or by visiting one of the program sponsors listed below.

Completed forms should be mailed or faxed to the Illinois Department of Agriculture. The mailing address is: Clean Sweep Program, Illinois Department of Agriculture, State Fairgrounds, P.O. Box 19281, Springfield, IL, 62794-9281. The fax number is (217) 524-4882. Participants then will be sent a reservation card indicating the date, time and location of their collection.

The "Clean Sweep" program began in 1990 in Illinois. Since its inception, the Department has held 54 collection events through the state and collected 662,517 pounds of material from 2,301 participants.

### Clean Sweep Sponsors in Henry County:

**Henry Farm Bureau**  
128 N Prospect St  
Cambridge, IL 61238

**Henry - Co. SWCD**  
301 East North St  
PO Box 162  
Cambridge, IL 61238

**Henry - Univ. Of IL Ext.**  
358 Front Street  
Galva, IL 61434

Interested in becoming an Election Judge in Henry County? If so, you can fill out an application by going to our website [www.henrycty.com](http://www.henrycty.com) under the Elections Department or you can call Barb Link, Henry County Clerk at (309) 937-3480.



### Freezer Beef for Sale

50/50 Wagyu and Angus Simmental  
Halves & Quarters Available  
Mitchell Vincent  
(309) 489-6301

### Hertz Farm Management, Inc.

Caring for You and Your Farm®

**Make the Most of Your Farmland Investment**  
Professional Farm Management • Farm Auctions  
Farmland Sales & Acquisitions • Certified Appraisals

309.944.2184 [www.Hertz.ag](http://www.Hertz.ag)

### Streitmatter Land Improvement, Inc.

110 S. Main • Wyoming, IL 61491  
Drainage & Excavating • GPS Equipped  
Water Table Management

Office 309-695-2800 Cell 309-696-9861

- GPS Mapping & Design
- Farm Drainage
- Waterways
- Commercial Tile Plow

starktiler@gmail.com

- General Hauling
- Dry Dams
- Terraces
- Basement & Ponds
- Stabilization Structures

### Miller Farm & Business, Inc.

Taxes • Accounting • Payroll  
Individual • Farm • Corporate • Trust & Estate  
1041 S Oakwood Ave • Geneseo, IL 61254  
Ph. 309.944.3290 • Fax 309.857.0182 • Email: [llmiller@millerfb.com](mailto:llmiller@millerfb.com)  
[www.millerfb.com](http://www.millerfb.com)

## IS YOUR STUDENT "SCHOOL READY?"

CALL FIRST CHOICE HEALTHCARE IN KEWANEE, COLONA & TOULON FOR:

- School & Sports Physicals
- Blood Lead Screenings
- Immunizations

**\$40 Cash Price For Exams Only!**  
\*Accept Most Insurances  
\*Immunizations at additional charge

### FIRST CHOICE HEALTHCARE

KEWANEE 309-852-5272  
COLONA 309-792-4011  
TOULON 309-852-3115  
\*Summer 2024 Pricing Only!

## GOLD STAR FS, INC.

Go digital with myFS!

- Mobile app access
- Online bill pay
- Paperless invoicing & more

Scan this code or go to [www.goldstarfs.grower360.net](http://www.goldstarfs.grower360.net) to get started.



FARM  
GATE

By Joanie Stiers



JOSEPHINE AND HER  
DISHWASHING MACHINE

ILLINOIS INVENTOR RESPONSIBLE  
FOR EVERYDAY LUXURY



On the occasion that the dishwasher is full before supper, we will dine on paper plates. I avoid generating dirty dishes that exceed the dishwasher's capacity like I avoid snakes. I have a phobia for both.

We run our dishwasher daily. Sometimes twice a day when our daughter has a big job for her home-based bakery business. The appliance brings order to life. The machine spares our family excessive time and water at the kitchen sink. It sanitizes forks and spoons, dries glasses without spots and handles greasy cookware better than humans.

Some people find hand-washing dishes therapeutic. I find it dreadful and rather gain immense satisfaction from strategically filling the dishwasher as full as possible, starting it every night and emptying it every morning. A single night of forgetting to start the dishwasher disrupts

the kitchen's flow and my mental state the next day.

Thank you, Josephine Cochrane, who invented an appliance I can't live without. Through Illinois Farm Bureau's Ag in the Classroom program, I learned that this female entrepreneur from Shelbyville, Illinois, invented and marketed the first commercially successful dishwashing machine. The children's book "Josephine and Her Dishwashing Machine" by Kate Hannigan tells the story of Josephine, who wanted a way to wash her fine china for entertaining guests while avoiding the time and chipping that came with handwashing.

Her dishwashing machine was patented in 1886 and won an award for design and durability at the 1893 Chicago World's Fair. Restaurants and hotels were early customers, but she died before the appliance gained ground at the consumer level in the 1950s when

homes could supply the hot water that the machine demanded.

Nearly 140 years since her patent, my husband has installed several dishwashers, and I prioritize the dishwasher-safe symbol on any new cookware purchase. Cake-decorating tips exit spotless from the top rack. Skillets and stockpots fit well in the bottom, and the capacity has only improved. Two racks of our three-rack model fit 6-quart bowls from stand mixers.

Unfortunately, not all items rate dishwasher safe. Aluminum baking sheets discolor in the dishwasher. Food processor containers melt and misshapen. And rain gauges lose their numbers (I just wanted the grime out of the bottom). But the appliance earns an A+ for removing filth rings from flower vases and preparing label-less peanut butter jars for recycling.



About the author: Joanie Stiers farms with her family in West-Central Illinois, where they grow corn, soybeans and hay and raise beef cattle, backyard chickens and farm kids.

FOUNDATION  
GOLF  
FUN DAY



HENRY COUNTY  
FARM BUREAU  
FOUNDATION

SAVE THE DATE

8.9.24

Baker Park Golf  
Course, Kewanee

Watch our Facebook page  
for more information! We  
can't wait to see you there!

CONCRETE COATINGS

FULLY INSURED

309-507-8188

EPOXYWRX.COM/QCA

RECEIVE  
20% OFF

Call for Details.

309-507-8188 | epoxywrx.com

May not be combined with any other offers.

EW

EPOXY WRX

QCA

WARRANTY PACKAGES  
INCLUDED

GARAGES - BASEMENTS - PATIOS  
SHOWROOMS - WAREHOUSES

GALESBURG  
LUMBER & CONSTRUCTION  
SUPPLY, LLC

161 N Academy St  
Galesburg, IL 61401

Phone: 309-342-5185  
Email: sales@galesburglumber.com

Local Service Delivery Specialty

Lumber

Ardex

Milwaukee Tools

W.R. Meadows

IMEL PUMP SERVICE

Business 937-5332 • Cell Phone 945-6533

Water Well Contracting • Water Systems Installed

Red Jacket & Goulds Pumps

Submersible Pump & Jet Pump Repairs

Trenching/Backhoe Service

Iowa Hydrants & Water Conditioning

403 N. West St., Cambridge  
Residence: 207 N. Poplar, Cambridge

HOLMSTROM  
REALTY SERVICES

RESIDENTIAL & AGRICULTURAL  
BROKERAGE • APPRAISALS • AUCTIONS

309-944-6423  
19746 E. 2050 Street  
Atkinson, IL 61235-9726  
www.holmstromrealestate.com

Tim Holmstrom  
Managing Broker  
Certified General Appraiser  
309-944-6423  
tim@holmstromrealestate.com

Sherry Holmstrom  
Broker  
309-944-6423  
sherry@holmstromrealestate.com

JEFFRIES  
TRUCK & TRAILER  
REPAIR



CAMBRIDGE IL

309-937-2402

HYDRAULIC HOSE REPAIR



NOMINATIONS OPEN FOR

FARM DOG

OF THE YEAR

Contest



Farmers are invited to submit nominations for the 2025 Farm Bureau Farm Dog of the Year contest, which comes with cash prizes and bragging rights. This is the seventh year of the contest, supported by Nestlé Purina PetCare, which celebrates farm dogs and the many ways they support farmers and ranchers.

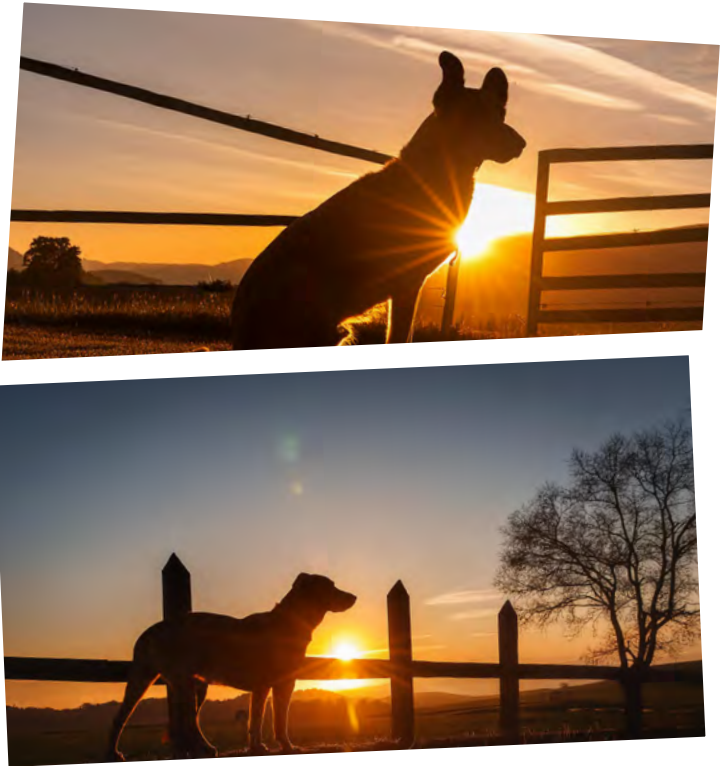
The grand prize winner – Farm Bureau Farm Dog of the Year – will win a year’s worth of Purina Pro Plan dog food and \$5,000 in prize money. The winner will be recognized at a Farm Dog of the Year award ceremony at the American Farm Bureau Federation (AFBF) Convention in San Antonio, in January 2025.

Not yet a Farm Bureau member but interested in nominating your farm dog? Visit [fb.org/join](https://fb.org/join) to learn about

becoming a member. Farm Dog of the Year nominations, which include written responses to questions, at least one still photo and a video clip (optional), must be received by July 12 for consideration. The Farm Bureau Farm Dog of the Year contest is sponsored by AFBF.

The 2025 Farm Dog of the Year will also be featured in a professionally produced video. Since its inception, the contest has provided a link to the farm for pet-loving Americans who vote for their favorite farm dog online.

More than 110,000 votes were cast online last year for the People’s Choice Pup, a popular social media element of the Farm Dog of the Year competition, which returns for 2025.



Your farm is your legacy.  
We can help you protect it.



Eric  
Henderson  
Geneseo  
(309)944-4618



Julie  
Hessler  
Orion  
(309)526-8024



Tom  
McKie  
Cambridge  
(309)937-3372



Jerry  
Samuelson  
Woodhull  
(309)334-3430



Erin  
Spivey  
Kewanee  
(309)852-2121



Katie  
Spivey  
Galva  
(309)932-3272



Cassie  
Stahler  
Geneseo  
(309)944-4618



Mike  
Geuns  
Annawan  
(309)935-6697



Dan  
Kniss  
Agency Manager  
(815)221-3075

Commercial insurance policies issued by COUNTRY Mutual Insurance Company®, Bloomington, IL.  
"COUNTRY Financial®" is the marketing name for the COUNTRY Financial family of affiliated companies (collectively, "COUNTRY"), which include COUNTRY Life Insurance Company®, COUNTRY Mutual Insurance Company®, and their respective subsidiaries, located in Bloomington, Illinois.  
1220-507HC\_9/15/2023



YOUNG LEADERS HOSTED

KIDS PEDAL PULL

The Farm Bureau Young Leaders held the annual “Kids Pedal Pull” at the Henry County Fair in Cambridge. There were 70 children, ranging from ages 1 to 11, that participated in the fun event! Pictured is 4-year-old, Olivia Kern, taking her turn on the pedal tractor at the 2024 fair. (Photo courtesy of Chelsea Vyncke)



FARM BUREAU AT HENRY

COUNTY FAIR

Cathy Carlson (left), Chair of the Farm Bureau Women, and Carol Dobbels, Secretary, greeted fair-goers at the Farm Bureau Booth at the Henry County Fair. Thank you to all the members that donated to our Ag in the Classroom (AITC) Fundraiser, to help us “Go for the Gold” for Henry County AITC!



# Learn More About the Farm Family Resource Initiative

## What is the Farm Family Resource Initiative helpline?

The Farm Family Resource Initiative (FFRI) Helpline is available at no cost to Illinois farm families. It is a confidential crisis and support line that you can call or text 1-833-FARMSOS (1-833-327-6767) or email FarmFamilyResourceHelpline@mhsil.com 24/7. Phone calls have interpretation available.

The Helpline is answered by trained professionals who can offer support and help you find mental health and agriculture-related resources in your area. Agriculture needs are unique – that is why our crisis specialists have received training on the factors that impact people working in agriculture.

## How is the FFRI Helpline different than 988?

Both the FFRI Helpline and 988 offer the same quality of suicide crisis services – but our crisis professionals have extra training to know the culture, values, stressors, and lived experiences of farm families.

**Why do farm families need their own helpline?**

Good mental health is good physical health. Social isolation, weather variability (such as extreme droughts or flash floods), limited access to health services, and fluctuating commodity prices have a direct impact on the mental health of farm families and farm workers. Stigma and privacy concerns associated with mental health may mean that many people

do not seek out available behavioral health services. Knowing that the professionals who answer the FFRI Helpline understand the unique stressors and situations of agriculture can lower some of those barriers and might encourage farm families to reach out.

**What happens when you call the FFRI Helpline?**

When you call, text, or email the line, you will be connected with a professional who is ready to listen, provide emotional support, and provide you with resources.

**Who can call the FFRI helpline?**

Any Illinois farm family member, worker, or Ag industry person can call the Helpline. We will not turn any callers away.

**Do you offer additional support?**

Yes, The Farm Family Resource Initiative also offers telehealth counseling with SIU Medicine counselors for those in need of additional support. Up to 6 individual, couple or group sessions are available at no cost.

**How do I sign up for telehealth counseling sessions?**

Call or text the helpline at 1-833-FARM-SOS or email FarmFamilyResourceHelpline@mhsil.com.

**Learn more**

To learn more about the Farm Family Resource Initiative helpline, counseling services or resources, call Karen Levitt Stallman at 618-713-0759 or email ffri@siumed.edu.

Farm Bureau  
Salutes the  
COUNTRY  
Financial  
Membership  
Recruiters of the  
Month



Erin Spivey,  
Kewanee



Cassie Stahler,  
Geneseo



SAVE THE DATE!

SENATOR NEIL ANDERSON AND  
REPRESENTATIVE TRAVIS WEAVER'S



**CHILDREN'S  
SAFETY  
EXPO 2024**

**SATURDAY, AUGUST 17, 2024**  
9:30am - 12:30pm  
**Blackhawk College Educational Center**  
404 E. 3rd Street, Kewanee, IL

Informational tables with resources available to families and hands on activities. Demonstrations every 30 minutes and a Touch a Truck with all kinds of vehicles for the kids to see, touch & sit on! Med Force medical helicopter will land at 9:30am! Come see it up and close!

**FREE Admission, FREE Refreshments, FREE Giveaways!**



**SAFETY  
STARTS WITH  
YOU**

**FREE COMMUNITY EVENT  
FOR THE WHOLE FAMILY!**

**Wednesday, July 10 | 5:30-7:00pm**  
**Central Bank Pavilion**  
**218 North State Street | Geneseo, IL**

Central Bank Concert Series – “3 On The Tree” beginning at 7:00pm  
Safety Demonstrations! Giveaways! Kids Activities! “Touch A Tractor”!

**Exhibitors**

- Henry County Health Department
- Henry County Mental Health Alliance
  - Gold Star FS
  - Wyffels Hybrids
- Geneseo Fire Department
- Henry County Sheriff's Department

- Geneseo Police Department
- Bishop Hill Fire Department
  - Grain Bin Rescue Team
- Cintas
- Operation Lifesaver Illinois

Sponsored by: Henry County Farm Bureau Health & Safety Committee  
For more information contact the Henry County Farm Bureau, (309) 937-2411





# ‘SHOP LOCAL’ ONLINE DIRECTORY BRINGS NEW OPPORTUNITIES TO COUNTY, CONNECTING COMMUNITIES TO LOCAL FOOD

Local food is becoming more accessible than ever with enhanced direct-to-consumer marketing opportunities for local farms and businesses through a new online county directory, Shop Local. Henry County Farm Bureau is making it easier to shop local and support your local community.

Shop Local is an online directory that brings fresh food and local business together. The Shop Local directory, powered by MarketMaker, provides simple, yet powerful search tools to connect growers, buyers, sellers and consumers.

*“Whether you’re looking for fruits, vegetables, meat, dairy, herbs, flowers, a pumpkin patch, a pick-your-own farm, vineyards, breweries or distilleries, you’ll find them in Henry County’s Shop Local online directory,” said Katie Laleman, Henry County Farm Bureau Manager.*

Local farmers and specialty growers can reach thousands of new customers by registering their business and adding the Illinois Farm Bureau affiliation to their Shop Local profile. Users can create an e-commerce store, or if the user has an already established online store, they can embed the link on their profile and reach new markets. Businesses will also be promoted to all Illinois Farm Bureau members through the Abenity membership discount program and mobile app.

Local community members interested in fresh and local food can access locally-grown or crafted products through a search, find their nearest farmers market, connect with community partners and more using the directory’s digital features.

“This is a new way to promote Illinois Farm Bureau members and local food through county Farm Bureaus and our membership app, Abenity,” said Raghela Scavuzzo, associate director of food systems development, IFB. “We are excited that counties throughout the state can offer this convenient resource to families ahead of the busy fall market season.”



## LEADERS MEET WITH CONGRESSMAN

Members of the Henry County Farm Bureau Board of Directors recently met with Congressman Darin LaHood. Pictured with LaHood are (l to r) Heather Poppy, Brian Corkill and Steve Nightingale.



*Shop Local is brought forth through a partnership with Illinois Farm Bureau (IFB), in cooperation with the Illinois Specialty Growers Association and Illinois MarketMaker.*



## TEACHERS ATTEND “AG IN A DAY”

Area teachers attended the Summer Ag Institute, “Ag in a Day”, held in June. The day long workshops are focused on many agriculture topics and include classroom programs and tours. Paula Janson, Henry County Ag in the Classroom Coordinator, is pictured instructing teachers on a lesson for students focused on dairy.



American consumers are embracing the convenience and security that comes with the transition from physical to digital.

Now offering paperless statements! Why go paperless?

- ✓ FREE
- ✓ Secure and convenient
- ✓ Easy, anytime access
- ✓ Less paper at home, office, shop
- ✓ Reduces risk of fraud and delivery delays
- ✓ Better organization



Signing up is easy!  
Scan the QR Code or visit <https://www.goldstarfs.com/Paperless-Statements> to go paperless today.





RECIPE OF THE MONTH

4TH OF JULY FIRECRACKER DOGS



**Ingredients:**

- 1 can refrigerated breadstick dough
- 2 packages of hotdogs (16 hotdogs total)
- 16 thick slices of Colby cheese (1/4"-3/8" thick)
- 16 skewers

**Instructions:**

1. Take your skewers and stick them all the way through your hot dogs, leaving about 1 ½" of the skewer exposed out of the top of each hot dog. Take a piece of breadstick dough and wrap it around the hotdog in a spiral.
2. Place wrapped hotdogs on a baking sheet, bake according to instructions on breadstick dough packaging.
3. While hot dogs are cooking, take out your cheese slices and use a small star-shaped cookie cutter to cut out your stars.
4. After the dogs have cooled for 2-3 minutes, stick the star through the skewer at the top.
5. Arrange on plate and serve.

GETTING TO KNOW YOUR FARM BUREAU POLICY

98. COMPENSATION OF PUBLIC OFFICIALS

We support:

1. Legislation requiring Congress and the Illinois General Assembly to vote by a roll call vote on any legislation that would increase their pay or pension of its members.

2. Pay and pension legislation being voted on separately and not being tied to unrelated legislation.

3. Legislation that would deny all state employment-related benefits to any state employee who is convicted under any federal, state, or local law of theft, embezzlement, or accepting bribes in connection with the employees service as a state employee. We support an amendment to the Illinois

Pension Code and/or other current law to the extent necessary to implement this proposed legislation.

4. Capping the pension amount that a state legislator can receive regardless of their length of service or the position(s) they hold with the state after leaving the legislature.

5. Enabling elected local and state officials having access to a 457 plan rather than a taxpayer-funded pension.

6. Requiring public employees to contribute a greater amount to their own pensions.

7. Legislators only receiving compensation for the days they are in office.



JULY IS UV SAFETY AWARENESS MONTH

How to Celebrate UV Safety Awareness Month

1. Wear Sunglasses

Protect your eyes from the sun's harmful UV rays by wearing sunglasses whenever you're outside. Look for sunglasses that have UVA and UVB protection.

2. Apply Sunscreen

Make sure to apply sunscreen with an SPF of at least 15 to all exposed skin. Reapply every two hours and after swimming or sweating.

3. Check the UV Index

The UV Index is a measure of the strength of the sun's UV radiation at a particular location. Check the index before heading out and if it's high, take extra precautions.

4. Wear Protective Clothing

Cover up with protective clothing such as wide brimmed hats, loose fitting long sleeve shirts, and pants when possible. Tightly woven fabrics are best at blocking UV rays.

Why UV Safety Awareness Month is Important

A. UV rays can be damaging

Exposure to the sun's UV rays can have serious long-term effects, including premature aging of the skin and a higher risk of skin cancer. It's important to be aware of these dangers so we can take steps to protect ourselves from excessive sun exposure.

B. Protection is necessary

It's important to wear protective clothing and sunscreen when out and about in the sun, even on cloudy days. Make sure you read labels to check that your sunscreen offers broad spectrum protection against both UVA and UVB rays!

C. Limit Sun Exposure when possible

Try to stay in the shade as much as possible during peak UV radiation hours (i.e. 10 am - 4 pm). Wear a wide brimmed hat if you are going to be outdoors for an extended period of time and remember to reapply sunscreen often!



Summer Savings



Take your Illinois Farm Bureau membership with you. Download the app or sign up today at [ilfb.abenity.com](http://ilfb.abenity.com). If you need assistance, give us a call at (309) 937-2411.